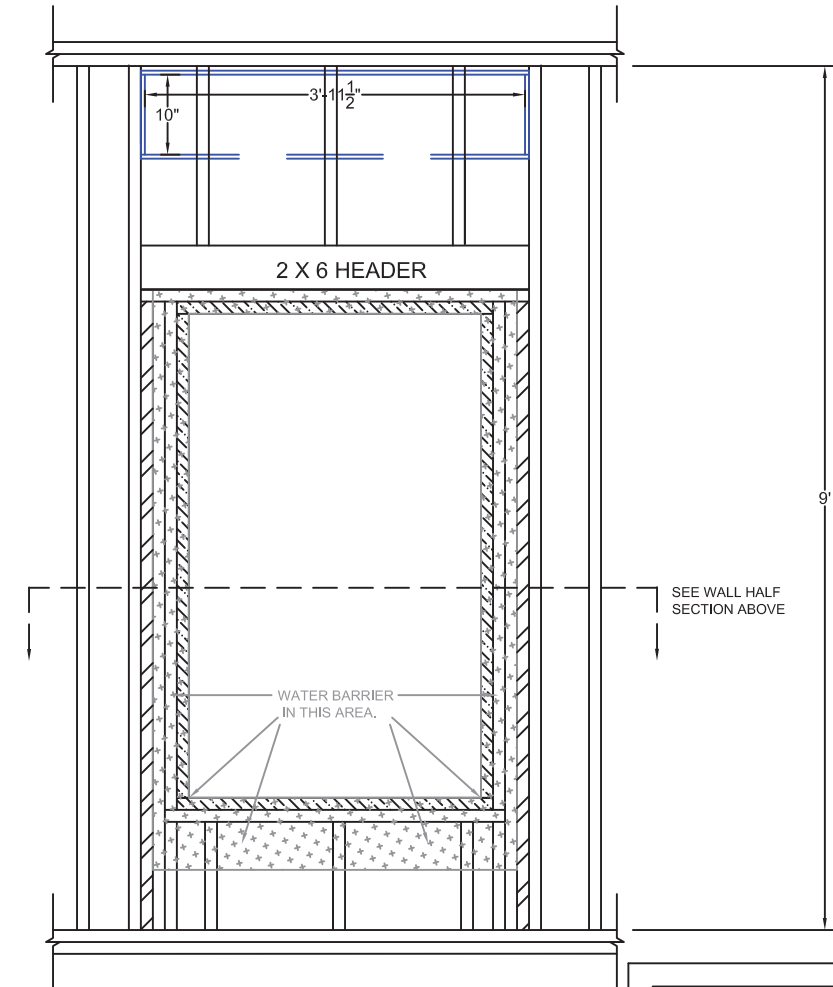
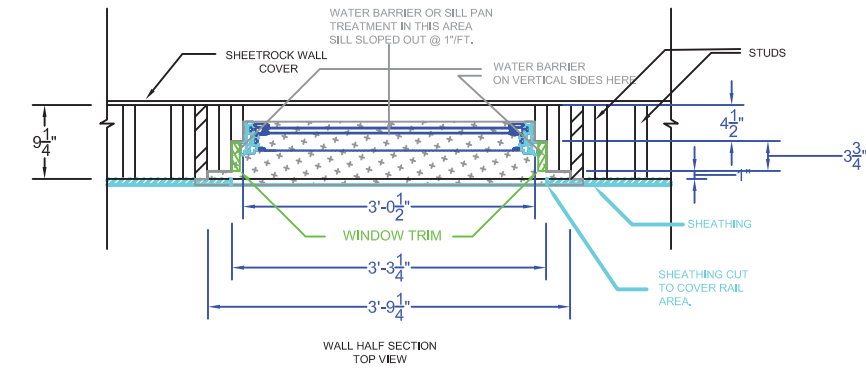


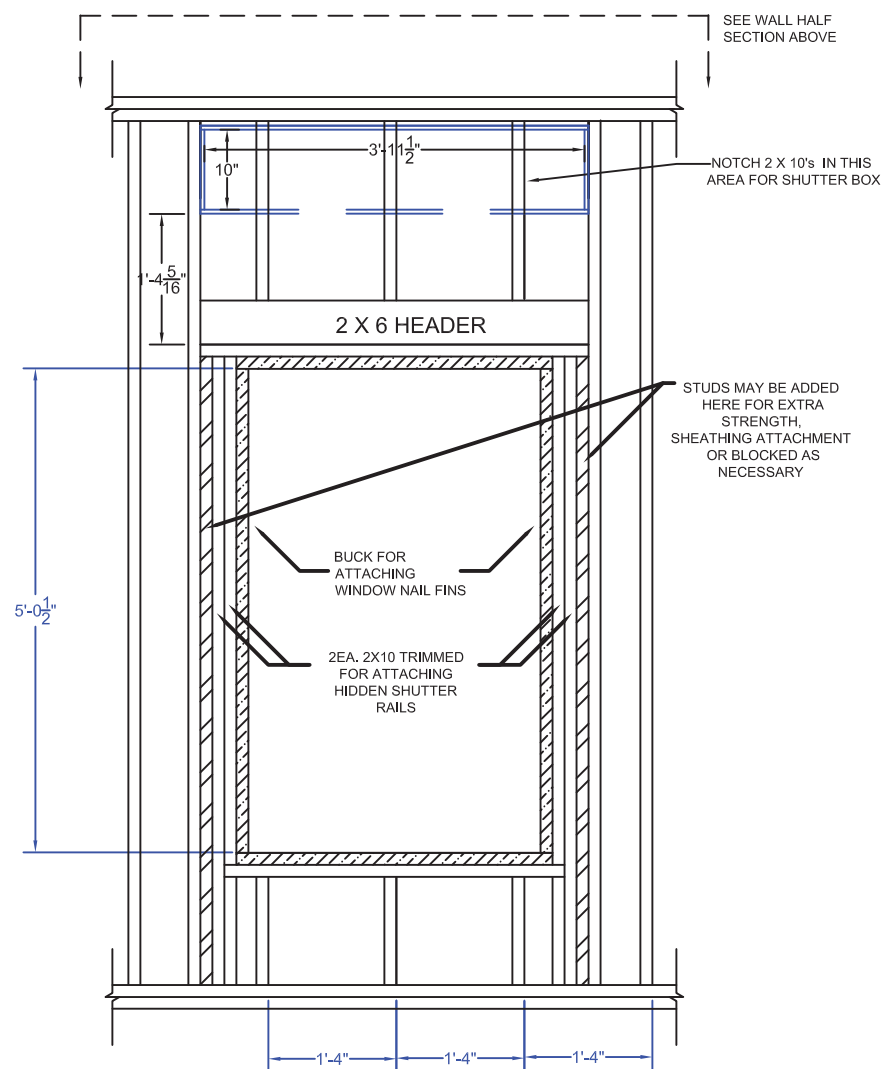
SOFFIT MOUNTED SHUTTER FRAMING AND WATER BARRIER DETAILS



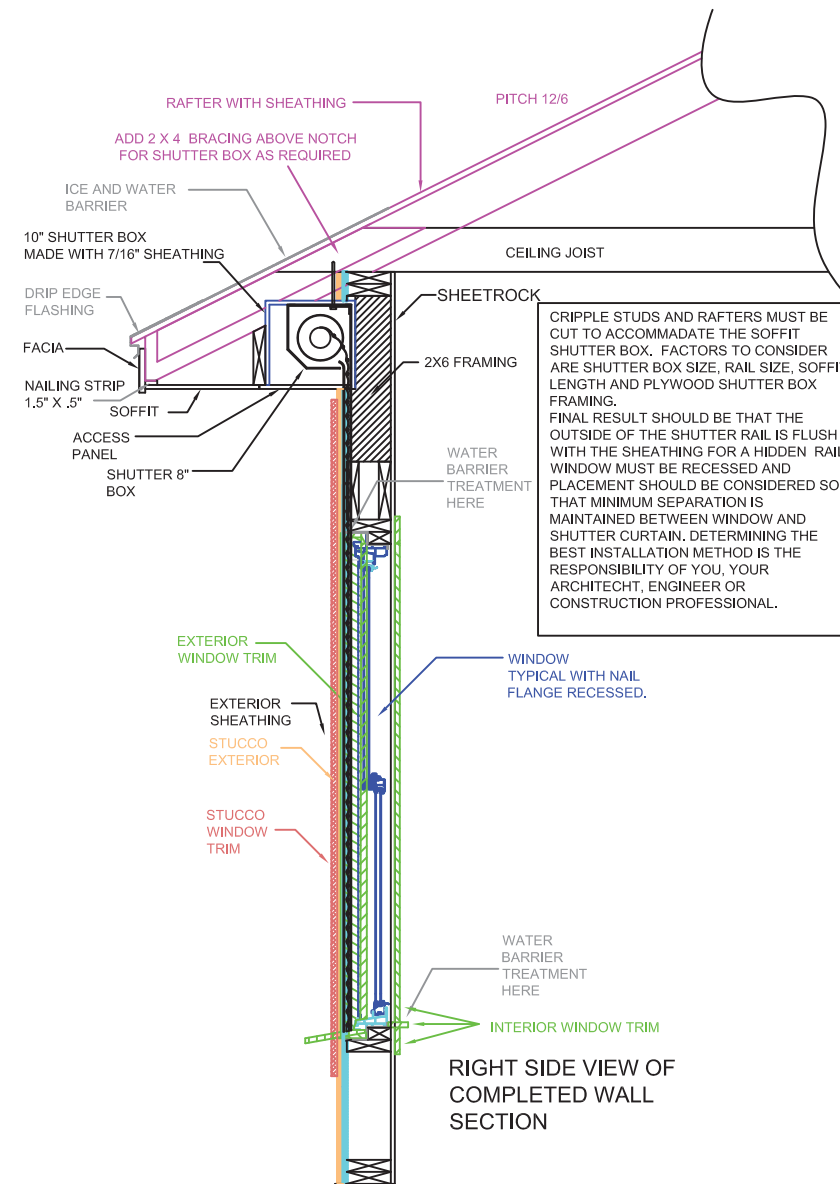
WATER BARRIER MUST BE INSTALLED PER MANUFACTURES INSTRUCTIONS FOR FLASHING OF RECESSED WINDOWS.



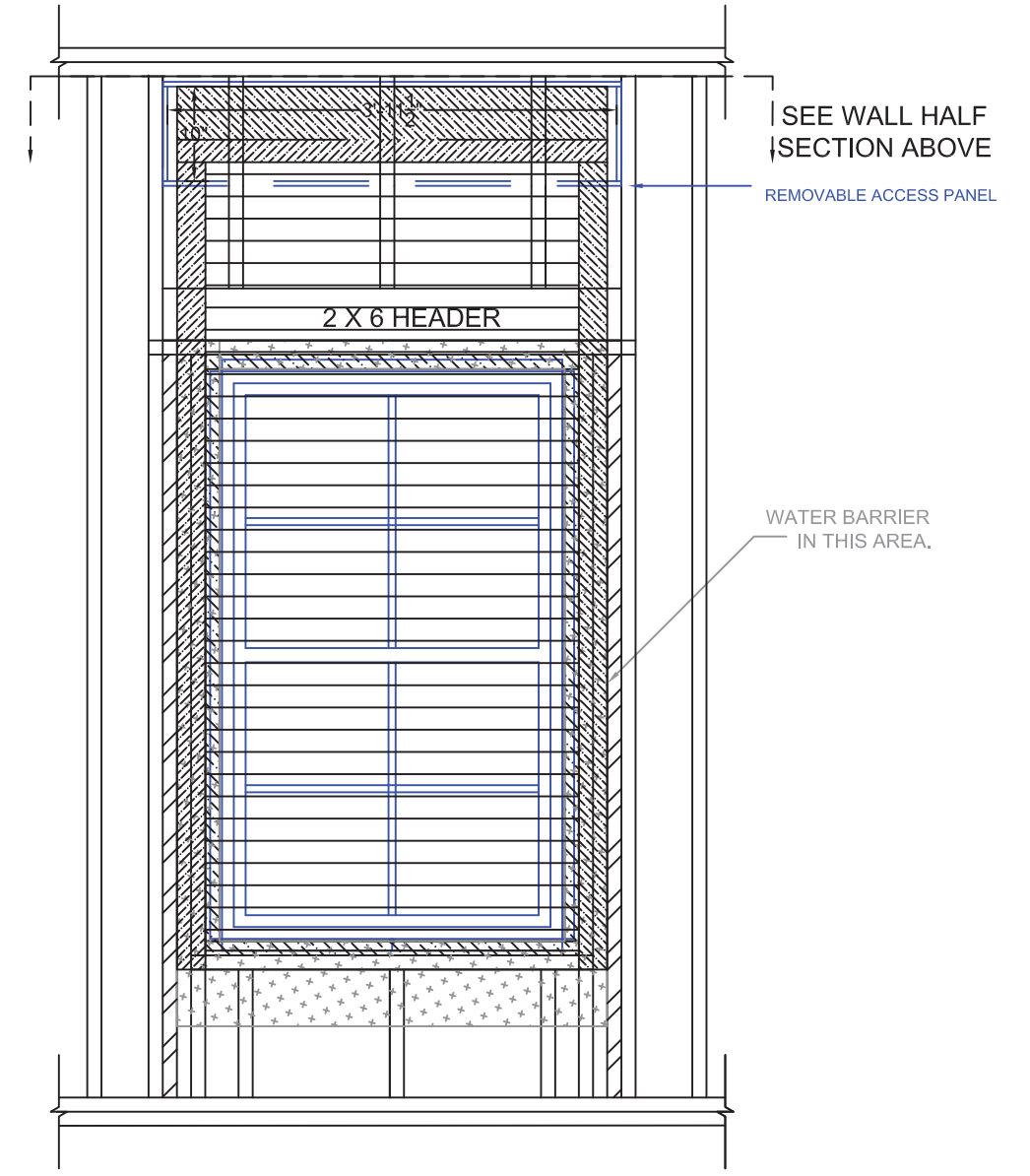
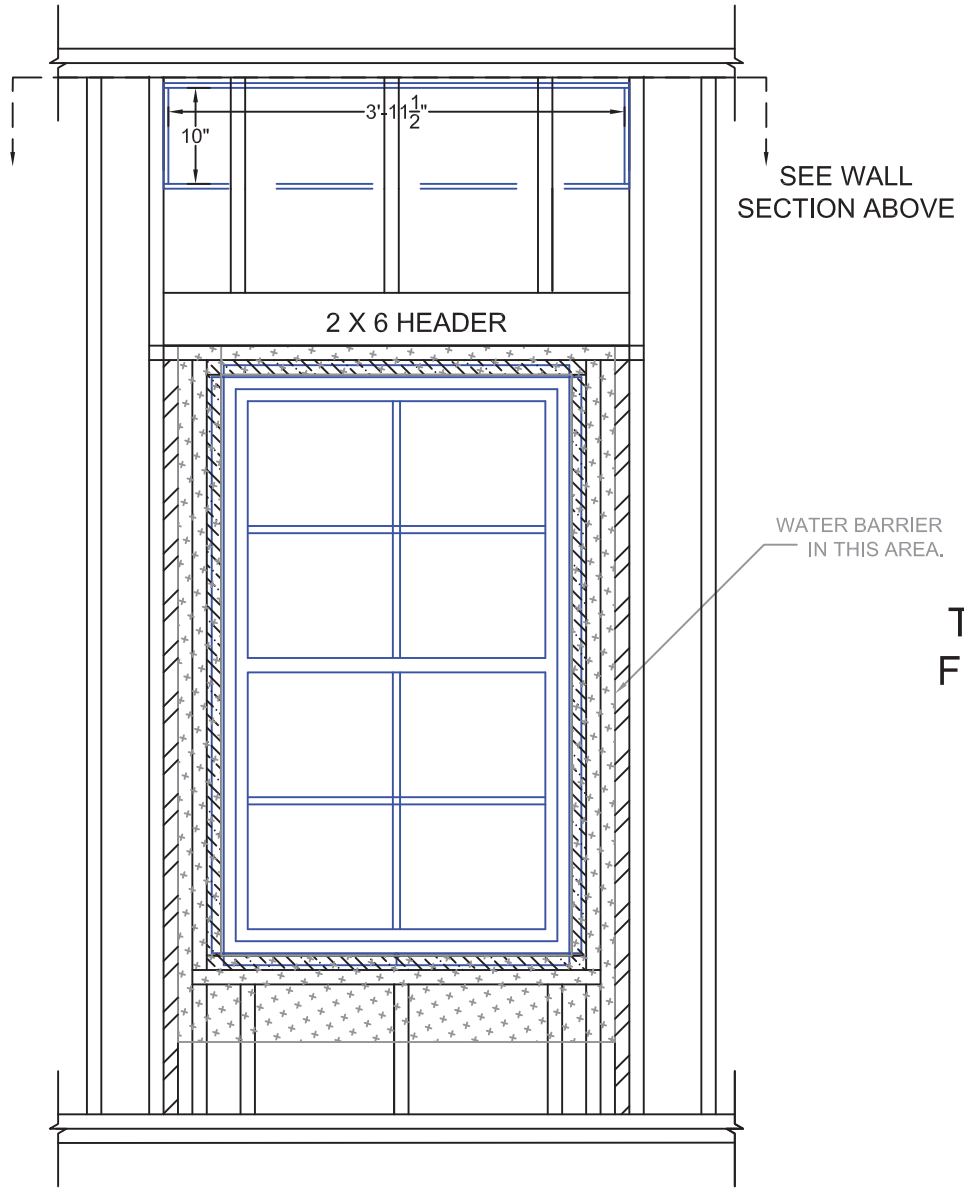
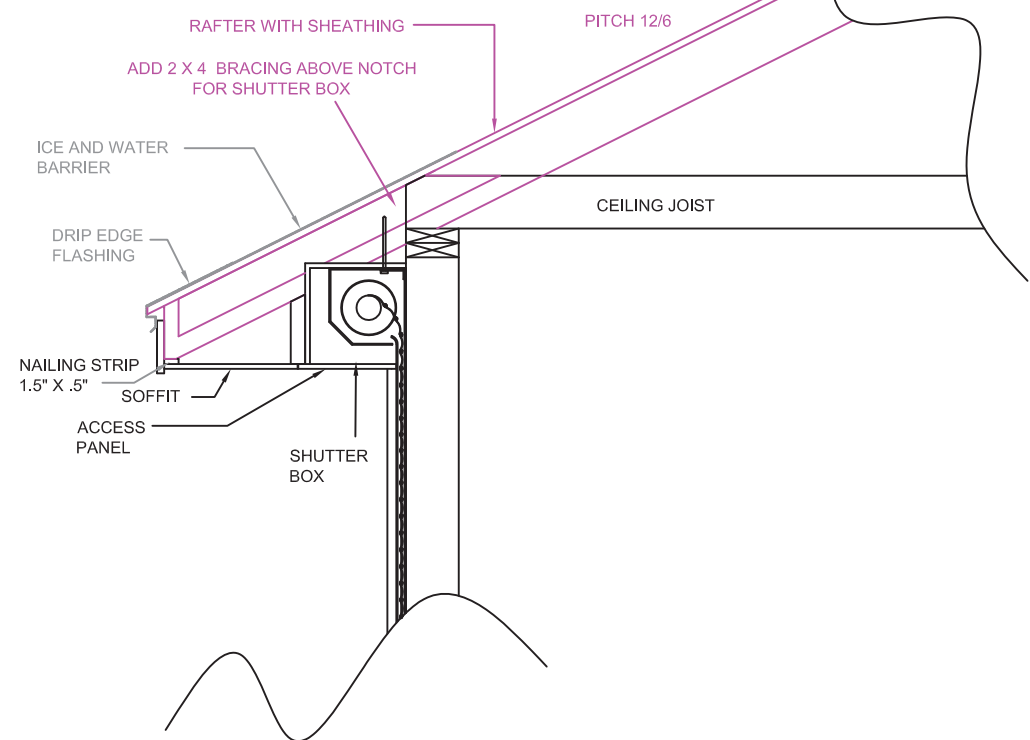
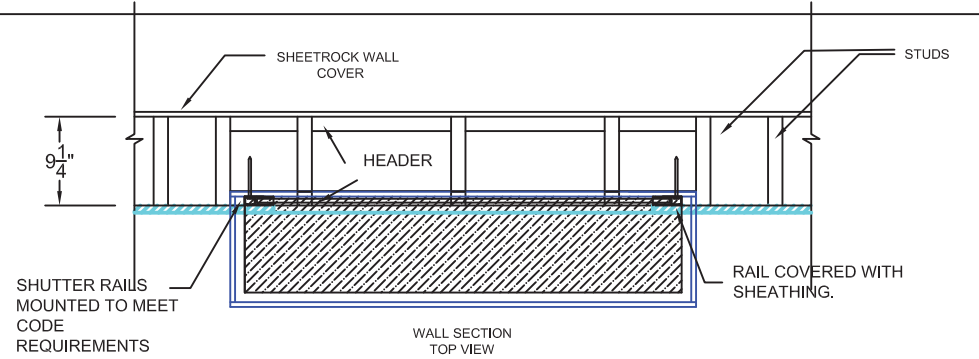
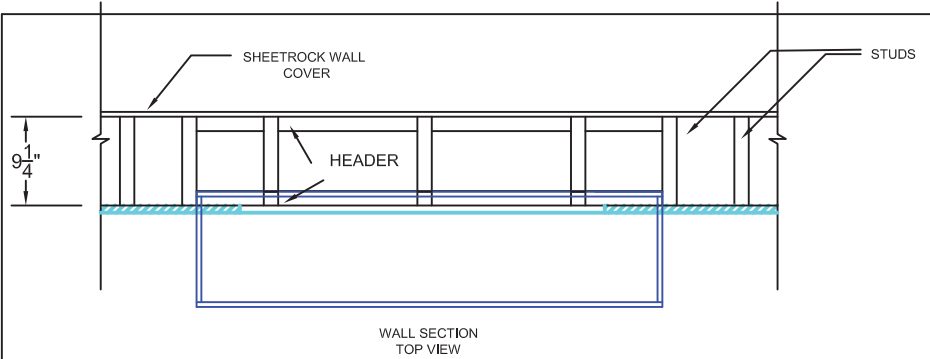
5331 W. Orange St.
Pearland, Tx. 77581
Tel: 281-485-0839
www.rollac.com



TYPICAL DETAIL FOR 30-50 WINDOW IN 2X6 FRAMING WITH SOFFIT SHUTTER BOX.



SOFFIT MOUNTED SHUTTER PAGE 1



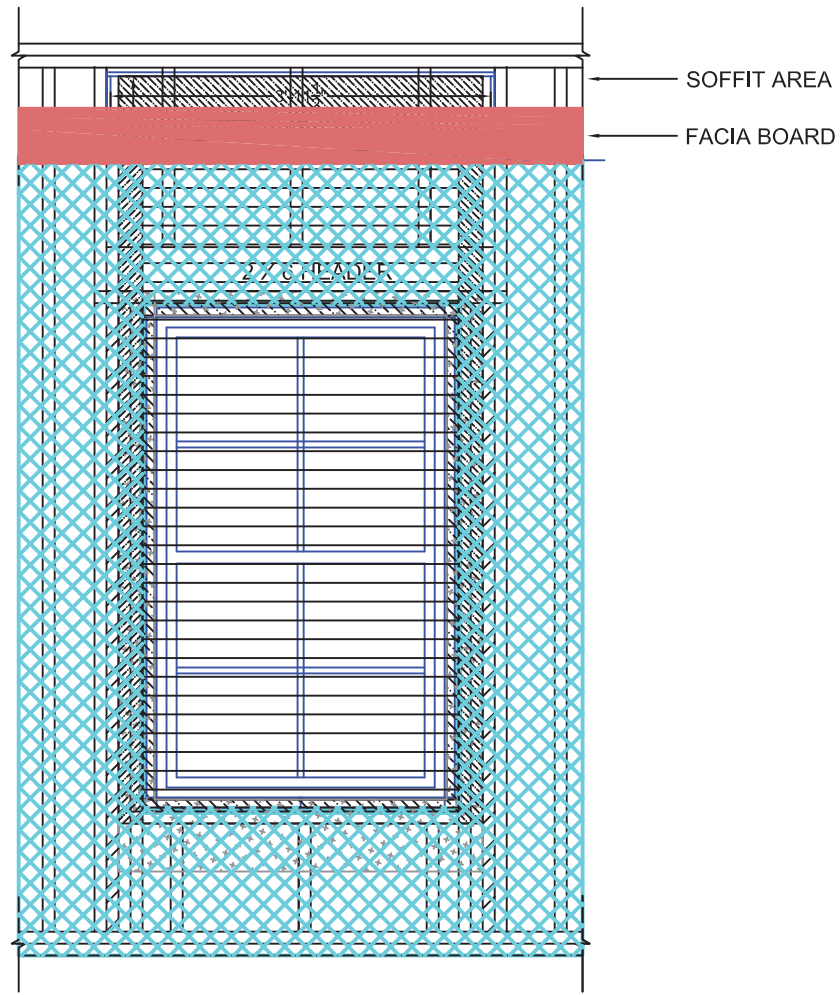
TYPICAL DETAIL FOR 30-50 WINDOW IN 2X6 FRAMING WITH SOFFIT MOUNTED SHUTTER

ATTACH 30 50 WINDOW WITH NAIL FINES TO BUCK AFTER FLASHING

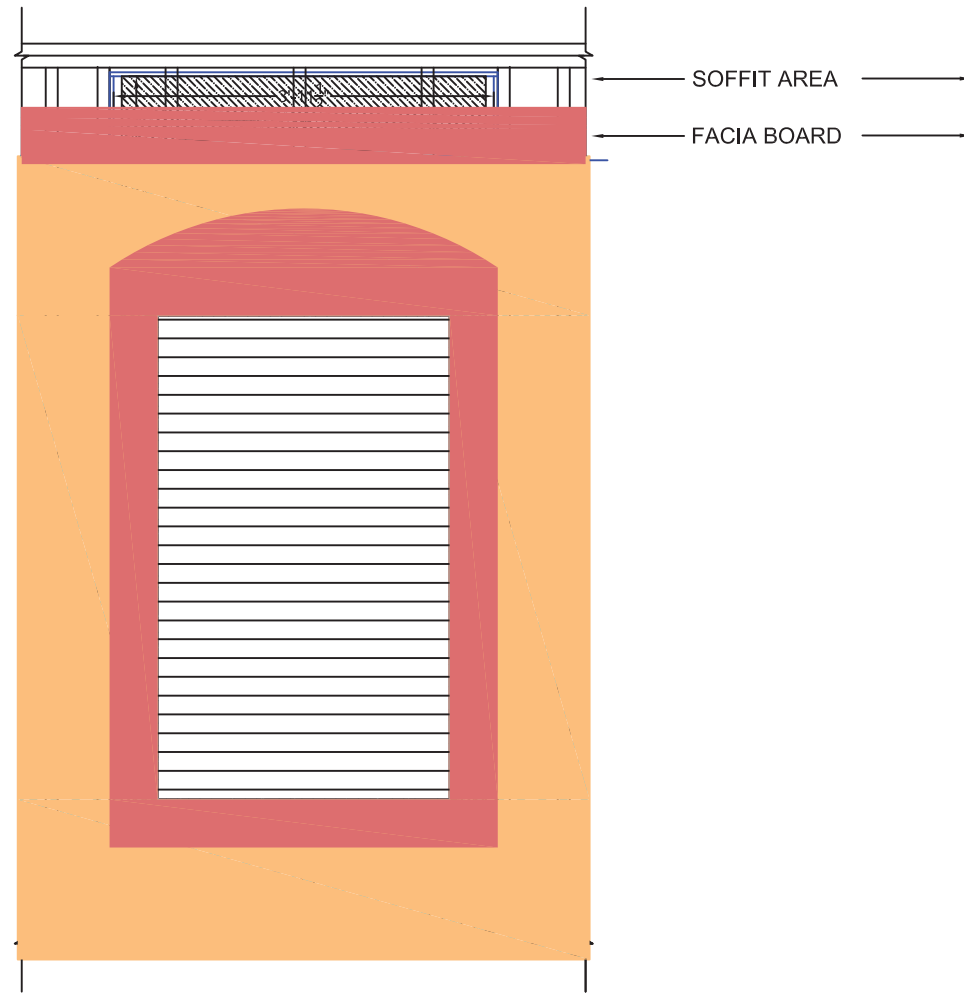
ATTACH ROLLAC ROLLING SHUTTER ACCORDING TO ROLLAC SPECIFICATIONS AND CODE COMPLIANCE.



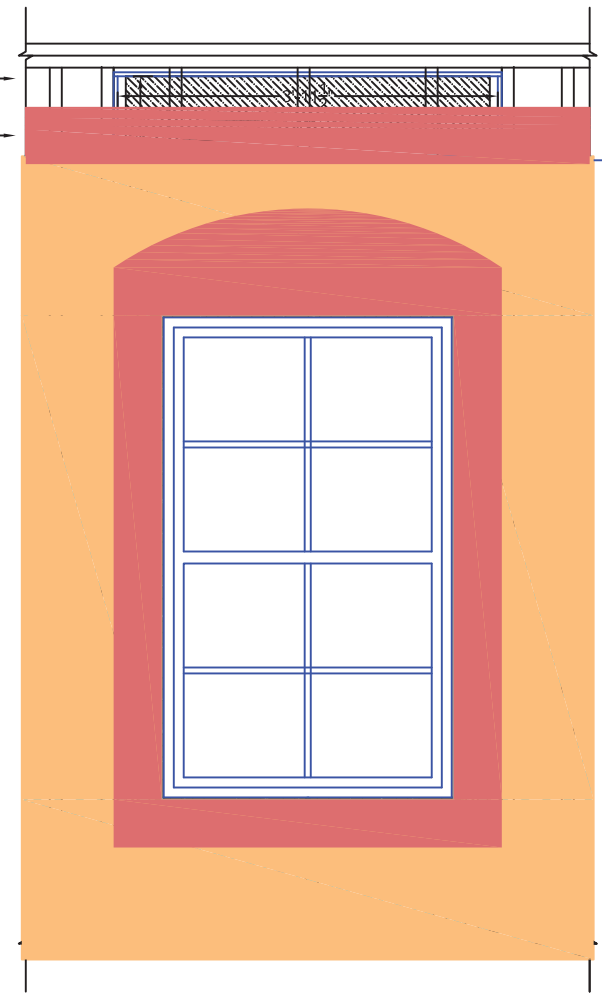
5331 W. Orange St.
Pearland, Tx. 77581
Tel: 281-485-0839
www.rollac.com



WALL SHEATHING TO COVER RAILS OF SHUTTER AND TO MATCH WITH INSIDE WINDOW TRIM. SEE FRAMING DETAIL.



STUCCO OR OTHER WALL TREATMENT WITH TRIM SHUTTER CLOSED.



STUCCO OR OTHER WALL TREATMENT WITH TRIM SHUTTER OPEN AND NOT VISIBLE FROM EXTERIOR.

SOFFIT MOUNTED SHUTTER
PAGE 3



5331 W. Orange St.
Pearland, Tx. 77581
Tel: 281-485-0839
www.rollac.com