



Dot-move setting

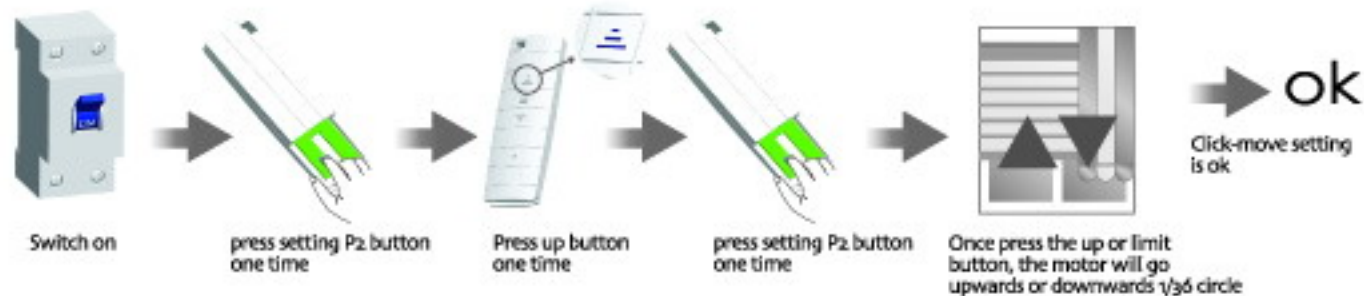
Additional Function



The interval of each button must within 6 seconds of re-setting, otherwise the system will restore the original state.



Repeat setting, function is cancelled



All controls support 433MHz & 868MHz
All controls support 230V/50Hz & 120V/60Hz



R: Radio
Mechanic Limit + Built-in Receiver

By DM35R DM45RM
DM45R DM59RM
DM59R DM45RQ



Version No.: B/D1

Radio Tubular Motor Specification

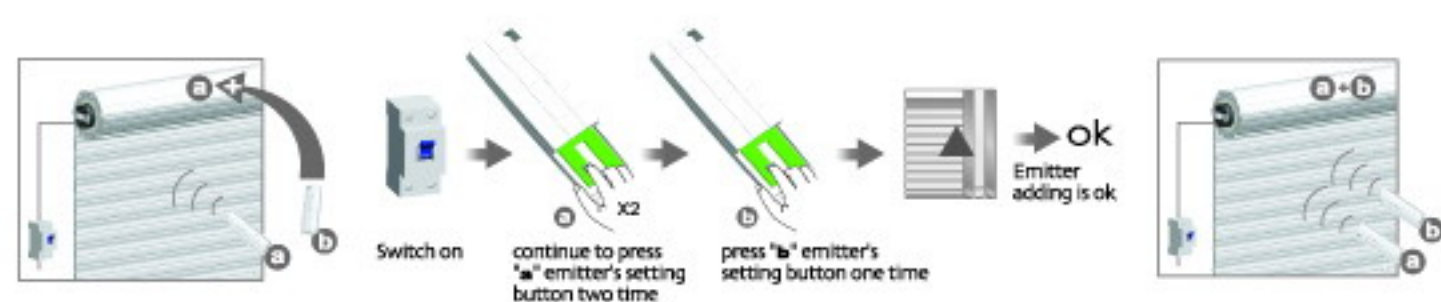


Add Emitter

Additional Function



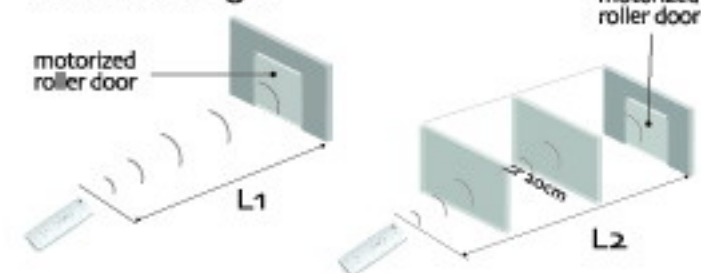
The interval of each button must within 6 seconds of re-setting, otherwise the system will restore the original state.



Technical Support

- 1-channel emitter = single-channel emitter x 5
One channel of emitter can control 20 receivers at most at the same time.
- Radio Tubular Motor
One R motor maximum can store 20 channels, over 20 channels, if still need add new channels, it will be repeating covered in turn from second channel.

Control Range



In the process of set up emitter and R type motor, every time press the key, motor will rotate one time as the signal (not press any key within 4 seconds after the while, the motor will turn to the original state). After the success of the set up, motor continuous rotate many times as signal.

Receiver in the mode of dot function, press up key and down key within 2 seconds, emitter control motor working in dot function; if continuous press more than 2 seconds motor will lose working.

Group control channel match code is unavailable, when group channel work together, the emitter can't be programmed, while function of dot-move, emitter-add and emitter-cancel still means.

	L1 Open	L2 Partition	Emission frequency
230V/50Hz	200m	35m	433.92MHz
120V/60Hz	200m	35m	



Cancel Emitter

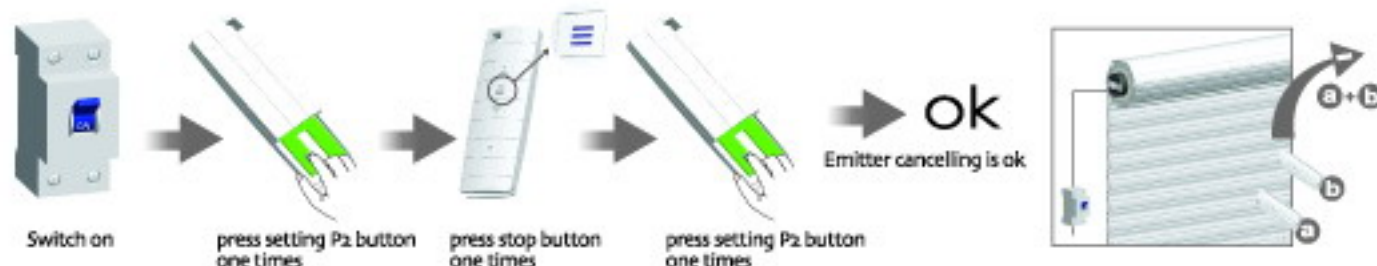
Additional Function



The interval of each button must within 6 seconds of re-setting, otherwise the system will restore the original state.



Canceling emitter is that remove all the memory of receiver stored in radio motor



Matchable emitter and motors

Technical Support



DC48 DC49 DC44 DC61
Pressing up button and stop button equals P2 button



- DM35R R: Radio
Mechanic Limit + Built-in Receiver
- DM45R R: Radio
Mechanic Limit + Built-in Receiver
- DM45RQ RQ: Quiet Radio
Mechanic Limit + Built-in Receiver + Quiet Device
- DM45RM RM: Radio With Manual
Mechanic Limit + Built-in Receiver + Manual
- DM59R R: Radio
Mechanic Limit + Built-in Receiver
- DM59RM RM: Radio With Manual
Mechanic Limit + Built-in Receiver + Manual



Common failures and solutions

Attention

	Fail-phenomena	Failure causes	solutions failure recovery
1	Switch on, the drive adapter runs in one-way operation	Inside limit switch of motor doesn't open	Crown running one circle in the opposite direction of the drive adapter, then it works
2	motor starts slowly or not work after connect power	a. Power voltage is slow b. Wiring error c. Overload d. Improper installation	a. Adjust power to rated data b. Check circuit and correct wiring connecting c. Rated torque associated with the installation of the load d. Re-install the motor
3	Motor stops suddenly after running	The motor works continuously for over the rated time - 4 minutes.	Motor will automatically resume work after 20 minutes cooling
4	Abnormal sound during roller blinds in operation	Outer tube is too long, led the rolling shutter connects with both sides of bracket too tightly	if idler is active, propering make the tube shorter to avoid too tight status.



Attention

